

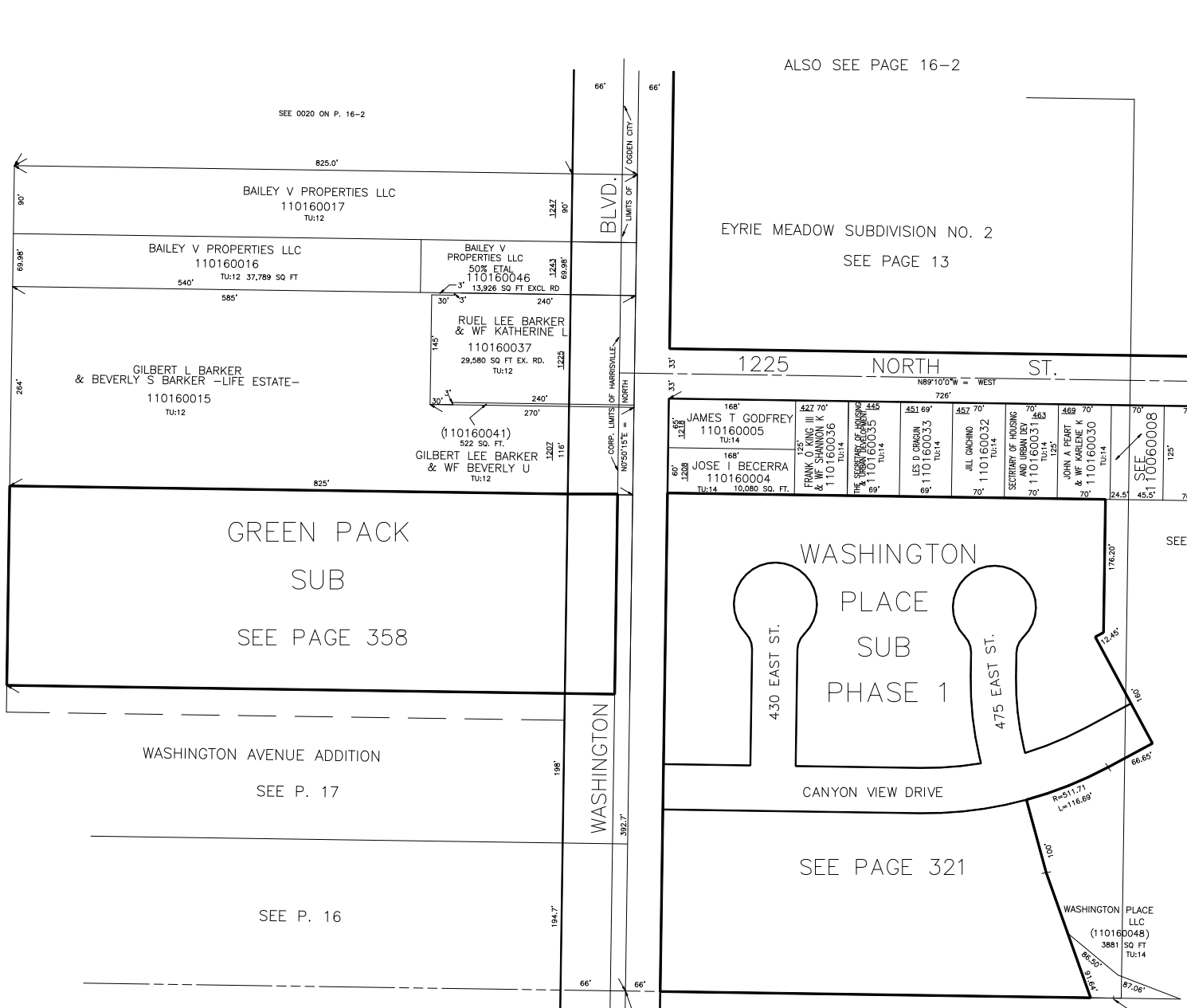
PART OF S.E. 1/4
SECTION 5, T.6N.,R.1W., S.L.B.&M.

IN THE TOWN OF HARRISVILLE & OGDEN CITY

TAXING UNIT: 12,14

SCALE 1" = 100'

PREFIX:11-016



ALSO SEE PAGE 16-2

EYRIE MEADOW SUBDIVISION NO. 2
SEE PAGE 13

1225 NORTH ST.

168' 127.5'	168' 127.5'	422 70' 110160005 TU:14	445' 110160036 TU:14	451 69' 110160033 TU:14	457 70' 110160032 TU:14	70' 110160031 TU:14	489 70' 110160030 TU:14	70' 110160008 TU:14	70' 1100600113 TU:14
JAMES T GODFREY		FRANK O'NEAL III & Wf SHANNON K		LES D ORGIN	JILL GACHINO	SECRETARY OF HOUSING AND URBAN DEV	JOHN A PEART & Wf KATHERINE K	SEE 110060008	
JOSE I BECERRA		110160004		10,080 SQ. FT.					

WASHINGTON PLACE SUB PHASE 1

430 EAST ST.

475 EAST ST.

CANYON VIEW DRIVE

SEE PAGE 321

WASHINGTON PLACE LLC (110160048) 3881 SQ FT TU:14

SEE 110060006

EYRIE MEADOW SUBD. NO. 1
SEE P. 7

WASHINGTON

BLVD.

666.7' W.

THIS "S.E. COR." REFERS TO RON-CLARE VILLAGE NO.1 & EYRIE MEADOW SUBDS. NO.1 & NO.2